

PRO
CONSULTING®
MARKET ANALYSIS. FINANCIAL CONSULTING



БИЗНЕС-ПЛАН

Pro-Consulting

Pro-Consulting
Pro-Consulting,

2017

Pro-Consulting,

Pro-Consulting –

2004

700

300

<http://pro-consulting.ua>

2005

2010

Pro-Consulting –

2011

« ».

« - »

www.pro-consulting.ua
03680, .
11, 5
/ : +38(044) 591-52-53;
+38(044) 591- 52- 63

Pro-Consulting, LLC
www.pro-consulting.ua
11 Predslavynska Str., 5 floor
Kyiv - 03680, Ukraine
Tel: +38(044) 591-52-53;
+38(044) 591- 52- 63

1.	4
2.	5
3.	7
3.1	АНАЛИЗ ТЕНДЕНЦИЙ РАЗВИТИЯ РЫНКА АЛЬТЕРНАТИВНОЙ ЭНЕРГЕТИКИ УКРАИНЫ	7
3.2	ОБЩАЯ ХАРАКТЕРИСТИКА РЫНКА СОЛНЕЧНОЙ ЭНЕРГЕТИКИ В УКРАИНЕ.....	11
3.3	ПРИВЛЕКАТЕЛЬНОСТЬ ОТРАСЛИ. ПРОГНОЗНЫЕ ПОКАЗАТЕЛИ РАЗВИТИЯ НАПРАВЛЕНИЯ.....	12
4.	13
4.1.	МЕСТО РЕАЛИЗАЦИИ НОВОГО ПРОЕКТА	13
4.2.	ПРОЦЕСС ВЫРАБОТКИ СОЛНЕЧНОЙ ЭЛЕКТРОЭНЕРГИИ	14
5.	16
5.1.	СЕТЕВОЙ ГРАФИК РЕАЛИЗАЦИИ ПРОЕКТА	16
5.2.	НЕОБХОДИМЫЙ ПЕРСОНАЛ И КАДРОВАЯ ПОЛИТИКА ПРОЕКТА.....	19
6.	22
6.1.	ПЛАН ФИНАНСИРОВАНИЯ ПРОЕКТА	22
6.2.	НЕОБХОДИМОЕ ОБОРУДОВАНИЕ И ДРУГИЕ АКТИВЫ.....	23
7.	25
7.1.	ИСХОДНЫЕ ДАННЫЕ ДЛЯ РАСЧЕТОВ И ИХ АРГУМЕНТАЦИЯ	25
7.2.	ПРОГНОЗ ПРОДАЖ ПО ПРОЕКТУ	28
7.3.	ФОРМИРОВАНИЕ ПРИБЫЛИ ПО ПРОЕКТУ	29
7.4.	ПРОГНОЗ ДВИЖЕНИЯ ДЕНЕЖНЫХ ПОТОКОВ.....	31
7.5.	ТОЧКА БЕЗУБЫТОЧНОСТИ ПО ПРОЕКТУ	33
8.	34
8.1.	АНАЛИЗ ПРИБЫЛЬНОСТИ.....	34
8.2.	ОЦЕНКА ИНВЕСТИЦИОННОЙ ПРИВЛЕКАТЕЛЬНОСТИ ПРОЕКТА	38
8.3.	СЦЕНАРИИ РАЗВИТИЯ ПРОЕКТА	41
9.	45
9.1.	ФАКТОРНЫЙ АНАЛИЗ РИСКОВ ПРОЕКТА	45
9.2.	СТРАТЕГИЯ СНИЖЕНИЯ РИСКОВ	47
9.3.	SWOT-АНАЛИЗ ПРОЕКТА	48
10.	49

2.

...
...
...

2009/28 /

2020 20%

5 . « »

« »

- ...
- ...
- ...

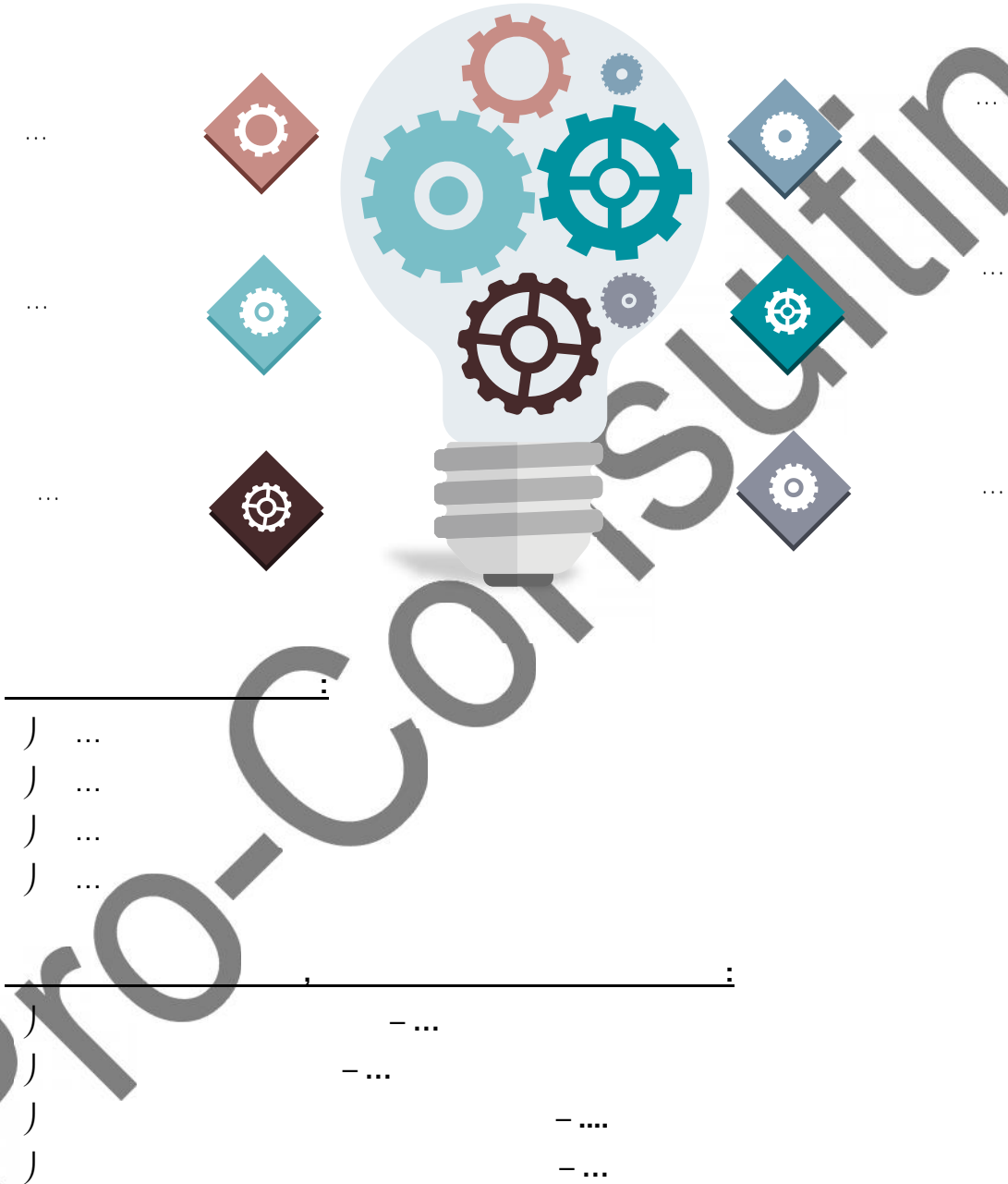
1. -



✓

- ✓
- ✓
- ✓
- ✓

2.



3.1

), , (

, , .

...

...

...

(IRENA),

...

IRENA, ...

...

—

), (

...

(...%

).

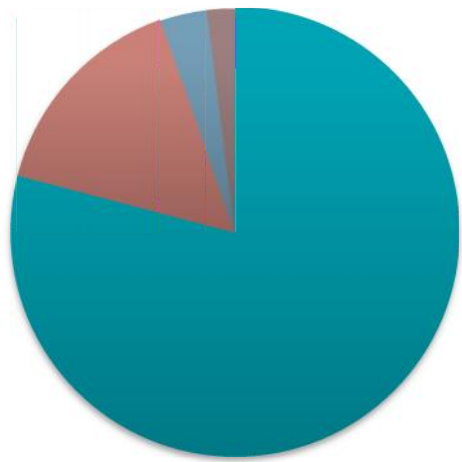
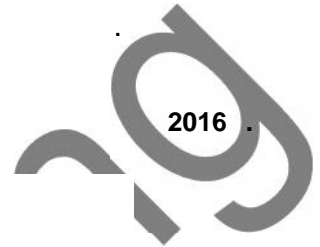
, — ...

(...%

2016,

... - /)

3.



-
-
-
-

Pro-Consulting

: IRENA



[Redacted text block]



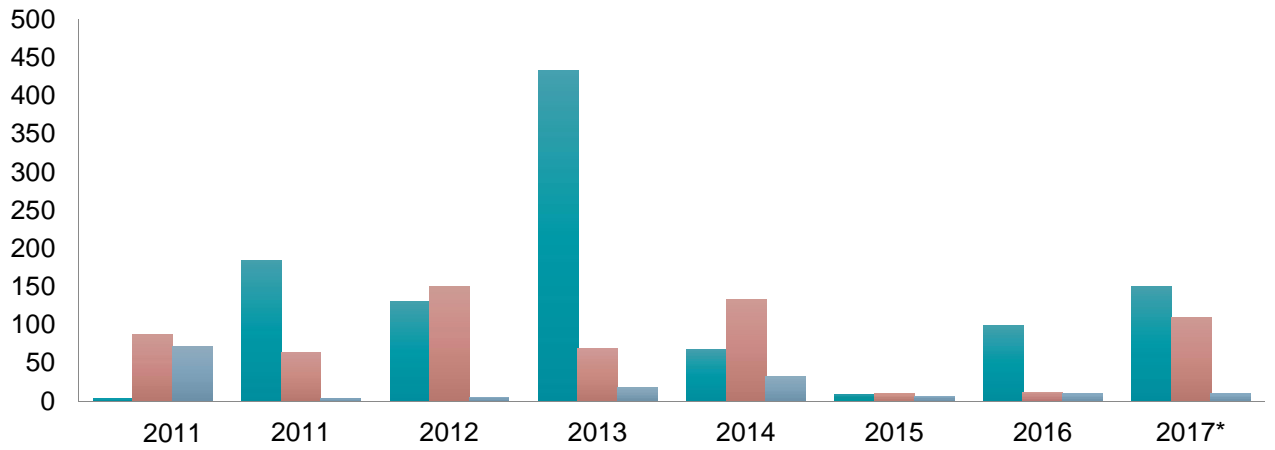
[Redacted text block]



[Redacted text block]

(),

4.



2013 ,

2017

...

...

2015

2016

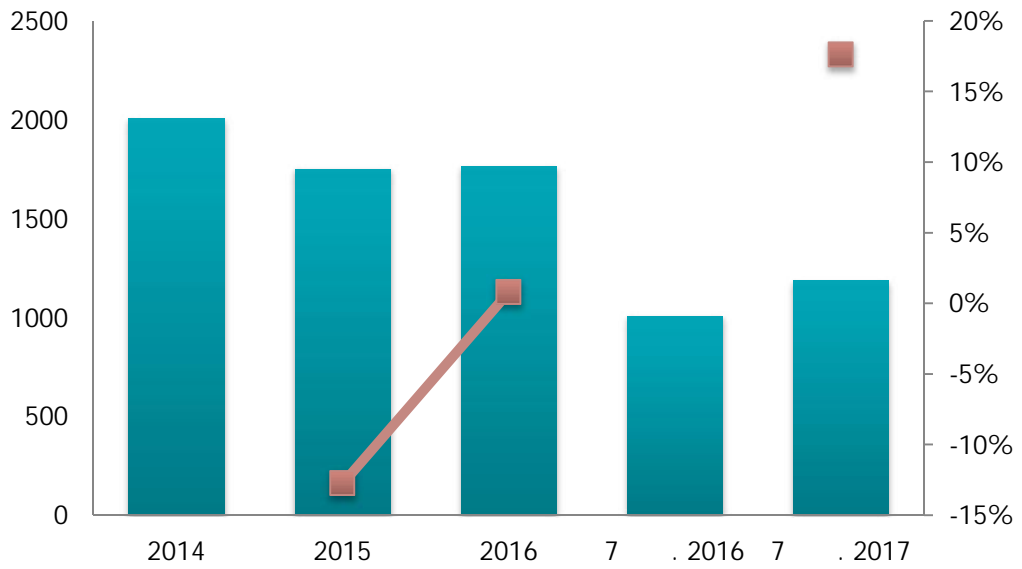
2017

....

5.

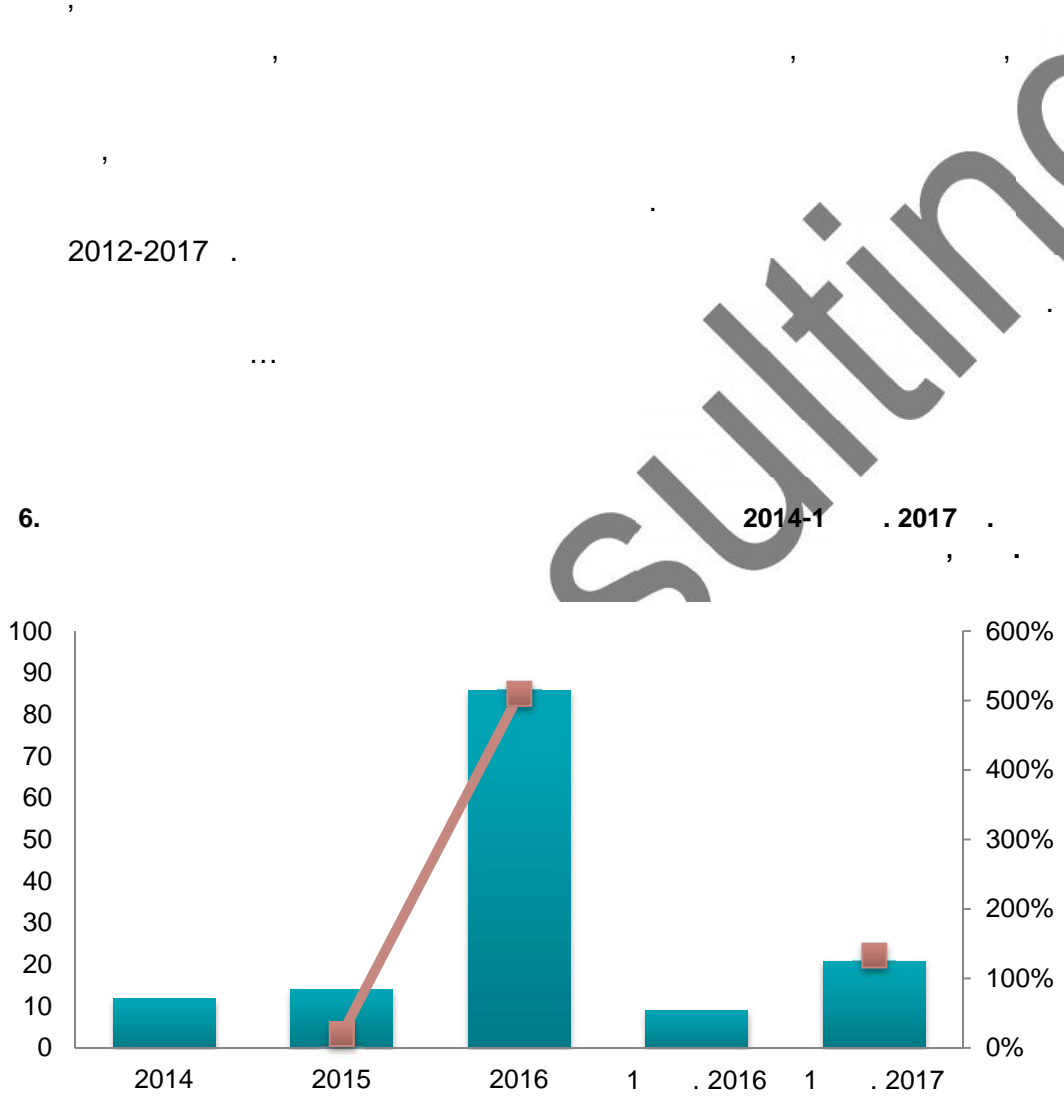
2014 – 7

. 2017



Pro-Consulting

3.2



Pr

IHS

IHS

2018

2,2

3.3

2014-2017

2012-13

2014-2015

)
)
)
)
...
)
)
)
)
)
)
)
)

Pro-Consulting

4.1.

7.



Pro-CC

4.2.

...

4,2

6

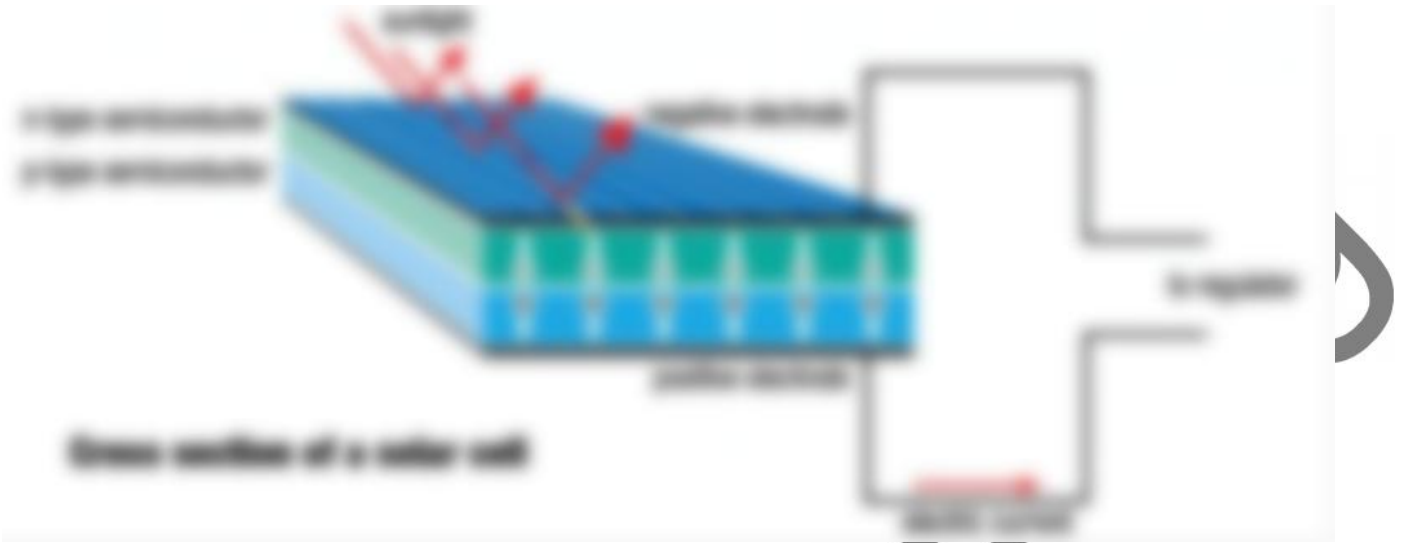


(PV)

...

(p),

(n).



Pro-Consulting



5.1.

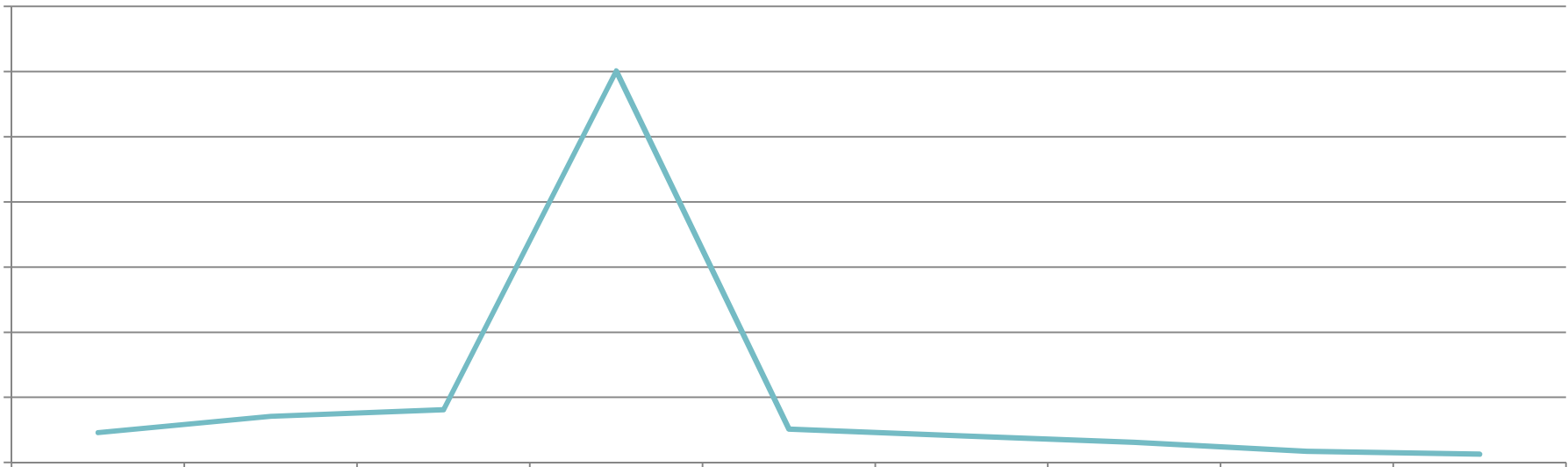
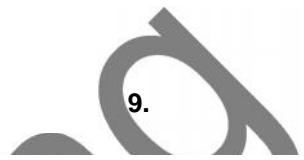
Consulting

1															
2															
3															
4															
5															
6															
7															
8															
9															
10															
11															
12															
13															
14															
15															



16											
17											
18											
19											
20											
21											
22											
23											
24											
25											
26											
27											
28											
29											
30											

Pro-



Pro-CC

5.2.

10.





2.

	-	¹ , USD	, USD	, USD	, USD
			\$4		
			240		
...					
...			\$90		
...			55		

)
)

- ...;

- ...

...

:

Pro-Consulting



z (; , ;) ;
z (; , ;) ;
z... ;

Pro-Consulting

6.1.

....

:

3.

()				
	...%	...%	...%	...

:

11.



Pro

6.2.

on-grid (. . .)

(

- PV power plants

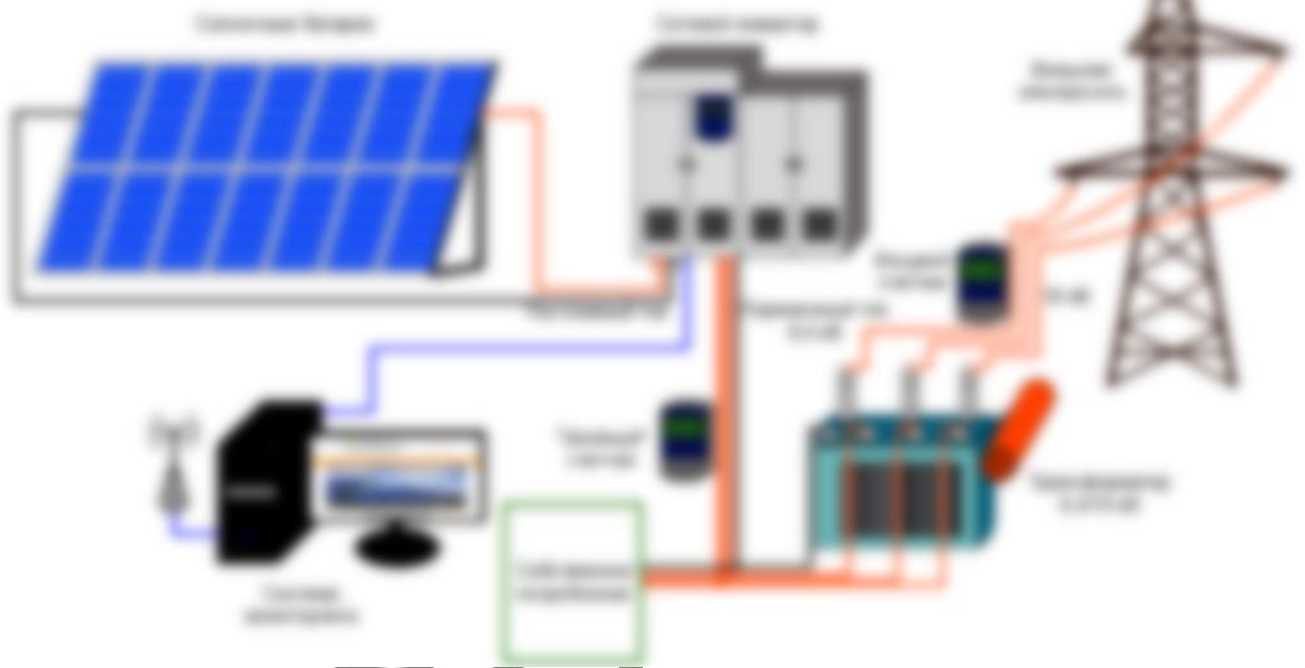
PV plants,

PV farms) –

...

12.

:



) ...
) ...

Pro-Consulting

-) ...
-) ...
-) ...
-) ...
-) ...

13.



2.			
		01.01.2017	31.12.2019
		01.01.2020	31.12.2024
		01.01.2025	31.12.2029
	,		
			1-5
			6-9
			10-13
	-		, %

3.		

1.

:

_____ *

2.

_____ (_____) _____

...%

) - ... / .

) 1-5 - ...

) 6-9 - ...

) 10-13 - ...

. 5.2

) - ...%

3.

144

) IV (5

7.

				1-	2-	3-	4-	
1								
2								
3								
4								
5								
6								
7								
8								
9								
10								
11								
12								

7.2.

...

...

8.

	1	2	3	4	5	6	7
	2018	2019	2020	2021	2022	2023	2024
, *							
, %							
, *							
, USD/ *							
, USD							

	8	9	10	11	12	
	2025	2026	2027	2028	2029	
, *						
, %						
, *						
, USD/ *						
, USD						

7.3.

9.

	1 2018	2 2019	3 2020	4 2021	5 2022	6 2023	7 2024
Sales ()							
()							
Gross Profit (())							
EBITDA							
EBIT							
()							
()							
Net Profit / Loss							



	8 2025	9 2026	10 2027	11 2028	12 2029	
Sales ()						
()						
Gross Profit (/ ())						
EBITDA						
EBIT						
()						
()						
Net Profit / Loss						

Pro-Consulting

7.4.

- 1)
- 2)

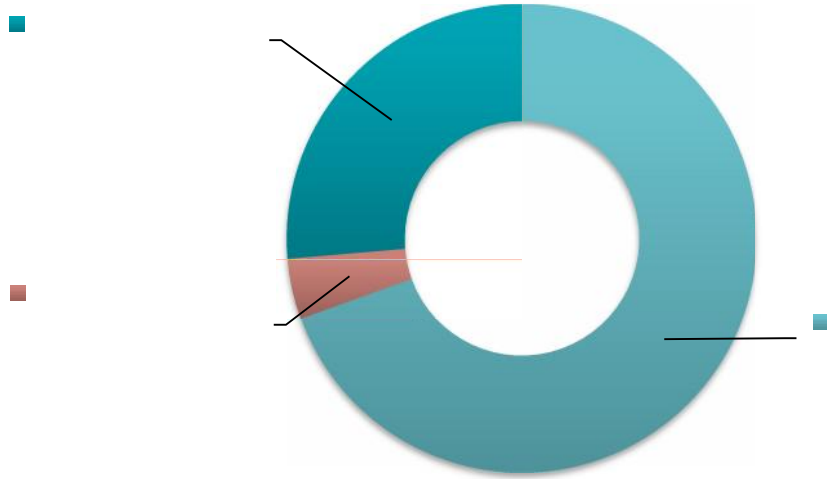
- 1)
- 2)
- 3)

		, c	



:

14.



Pro-Consulting

7.5.

11.

	(*)	
		\$9, 3
		10 2
		445
		\$340 6

12.

	1	, \$/

13.

	, %

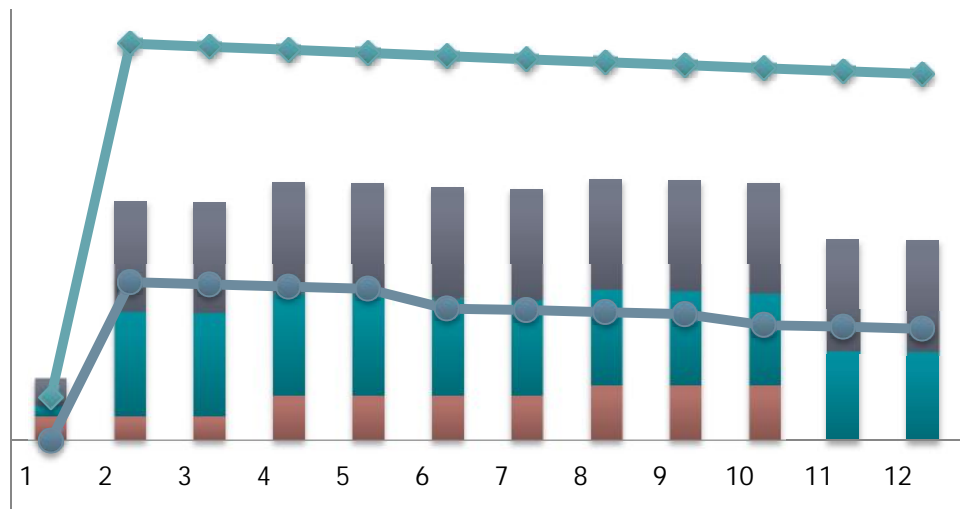
8.1.

14.

	1	2	3	4	5	6	7

	8	9	10	11	12	

15.



-) **Gross profit Margin (%) –** – ...
-) **EBITDA Margin (%) –** ...
-) **Ordinary Income Margin (%) –** ...
-) **Return on sales (%) –** – ...

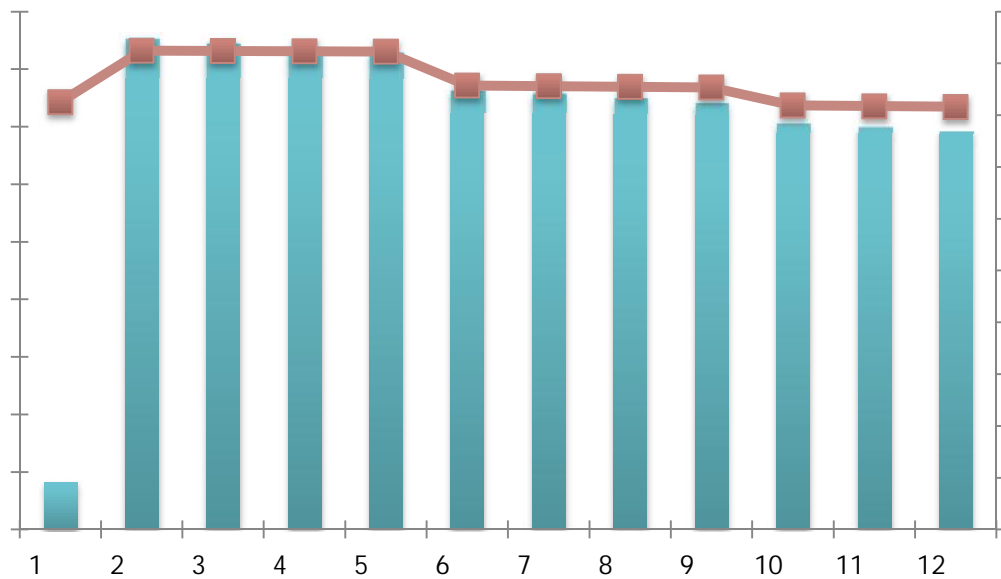
15.

	1	2	3	4	5	6	7
Total Revenues ()							
Gross Profit ()							
Gross profit Margin, % (, %)							
EBITDA ()							
EBITDA Margin % (EBITDA, %)							
EBIT ()							
Ordinary Income Margin (, %)							
Net Profit / Loss (/)							
Return on sales , % (, %)							

	8	9	10	11	12	
Total Revenues ()						
Gross Profit ()						
Gross profit Margin, % (, %)						
EBITDA ()						

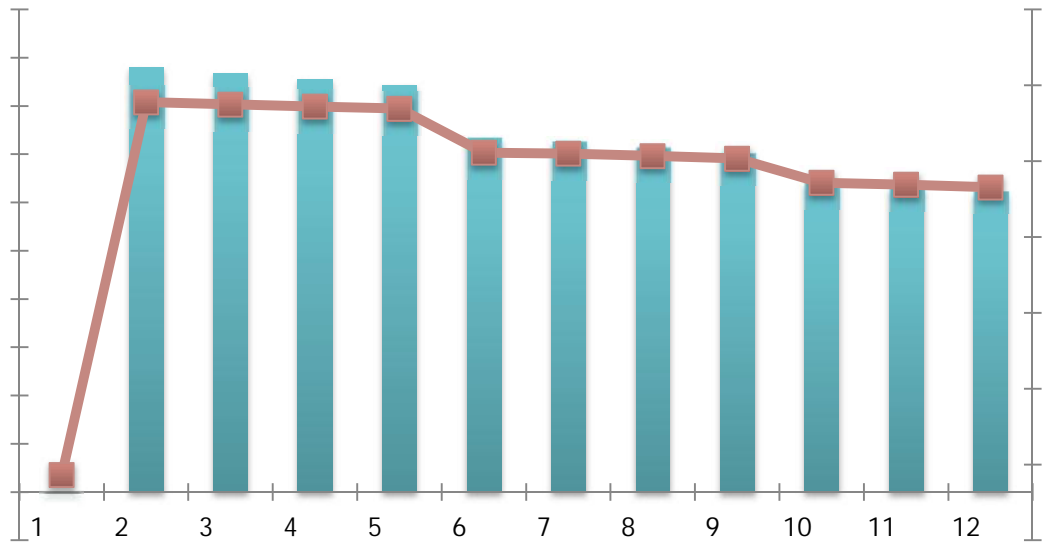
EBITDA Margin % (EBITDA, %)						
EBIT (
Ordinary Income Margin (, %)						
Net Profit / Loss (/)						
Return on sales , % (, %)						

16.



17.

/



Pro-Cons

8.2.

Weighted Average Cost of Capital)

$$WACC = X \cdot kd + B \cdot wd + * \cdot f1 + Z \cdot tc + \Delta \Gamma \cdot ks + B \cdot ws$$

Kd –

Wd –

...%;

Tc –

Ks –

Ws –

WACC – ...%.

$$WACC = X \cdot \dots\% + B \cdot \dots\% + * \cdot f1 + Z \cdot 0,18 + \Delta \Gamma \cdot \dots\% + B \cdot \dots\% + X \cdot \dots\%$$

16.

(Payback period) - PP		
(Discount payback period) - DPP		
(Project period) PP		
(Net Present Value) - NPV		
(Internal rate of return)- IRR	%	
(Profitability index)- PI		

(Return On Sales, Net Profit Margin) - ROS	%	
(Return on investment) - ROI	%	

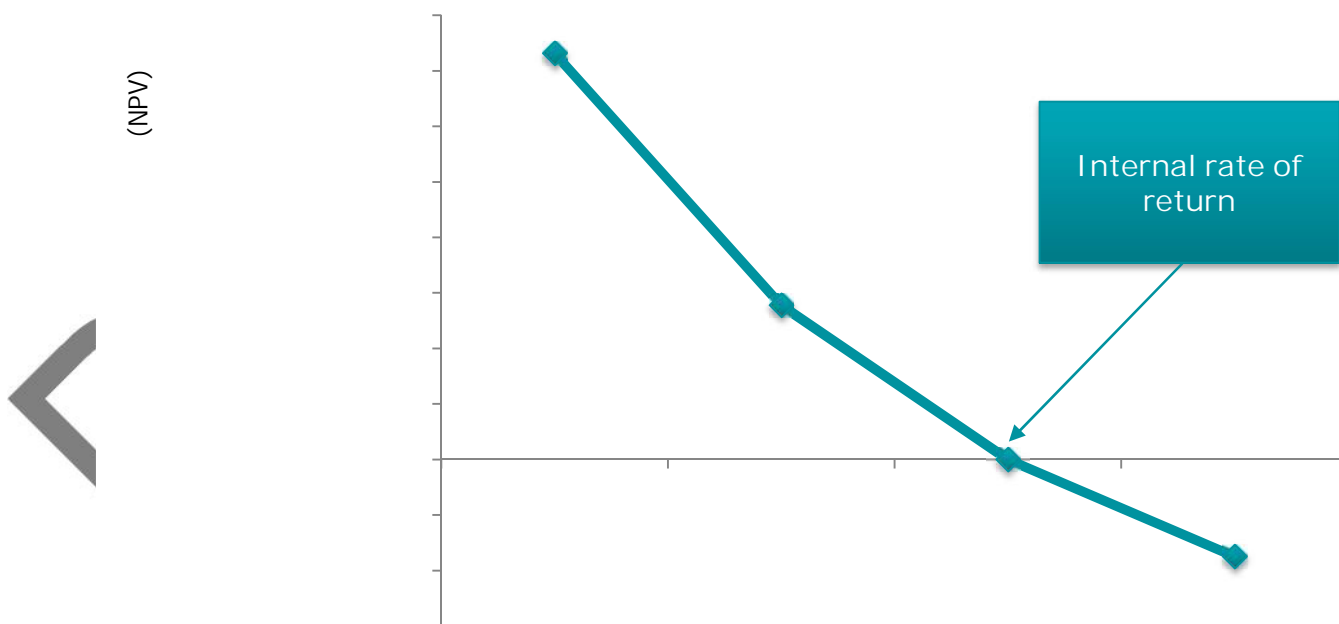
(NPV)

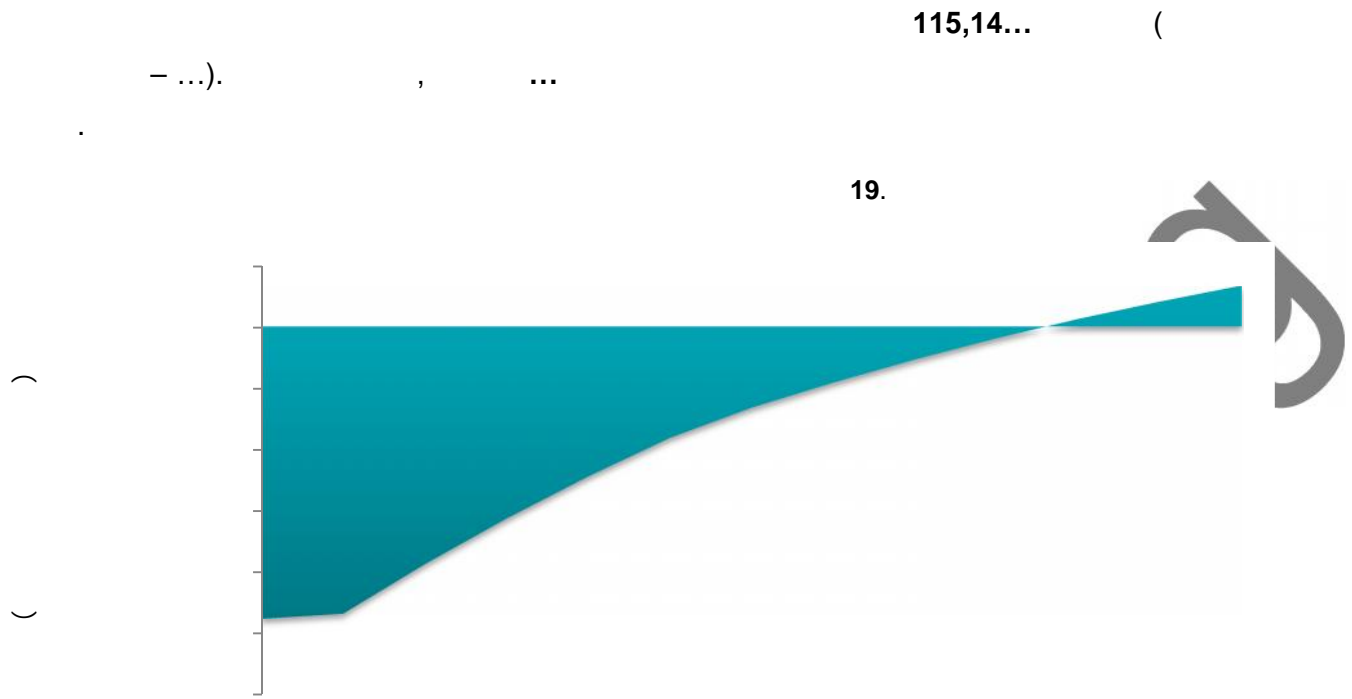
NPV, «0»,

(IRR)

...%

18.





Pro-Consulting

.....

.....

.....%

.....

.....

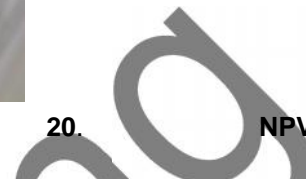
8.3.

100%

1)

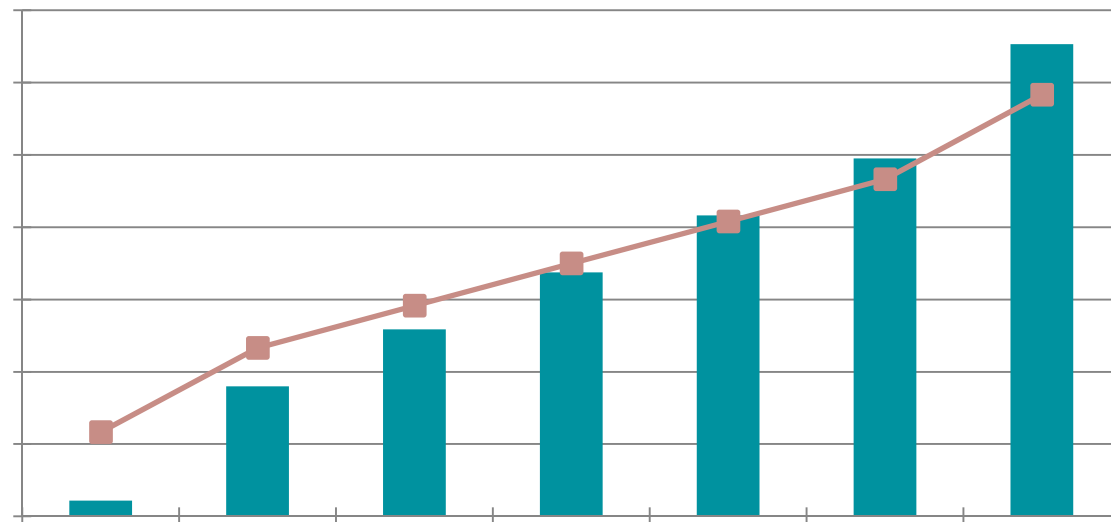
17.

NPV ()							
IRR ()							
PI ()							
DPP ()							

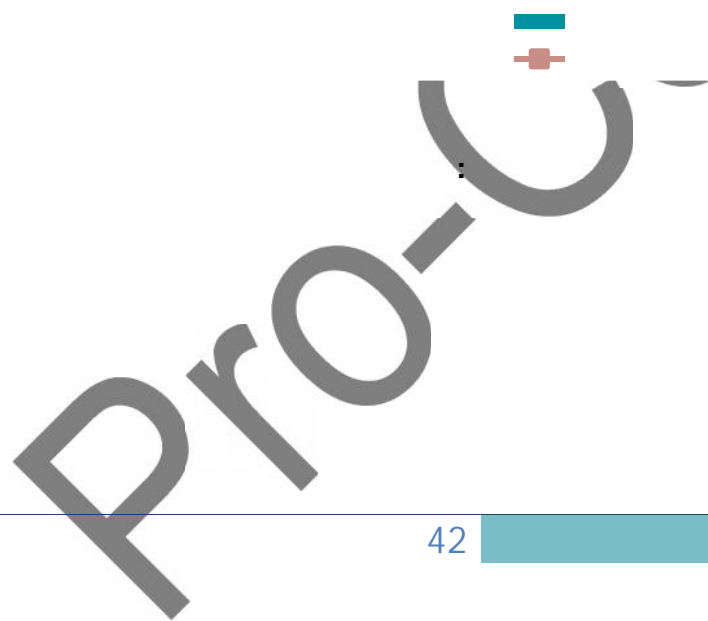


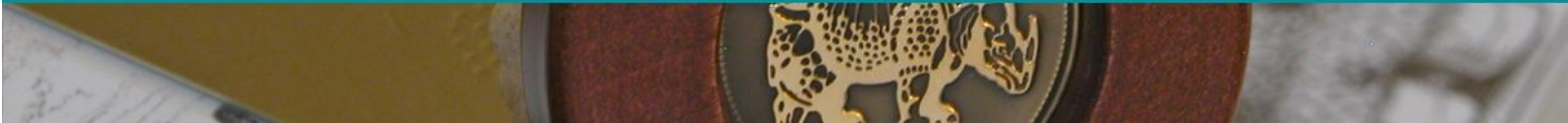
20.

NPV



2)





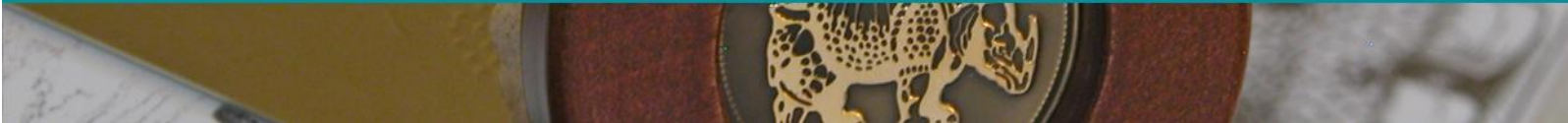
18.

NPV ()							
IRR ()							
PI ()							
DPP ()							

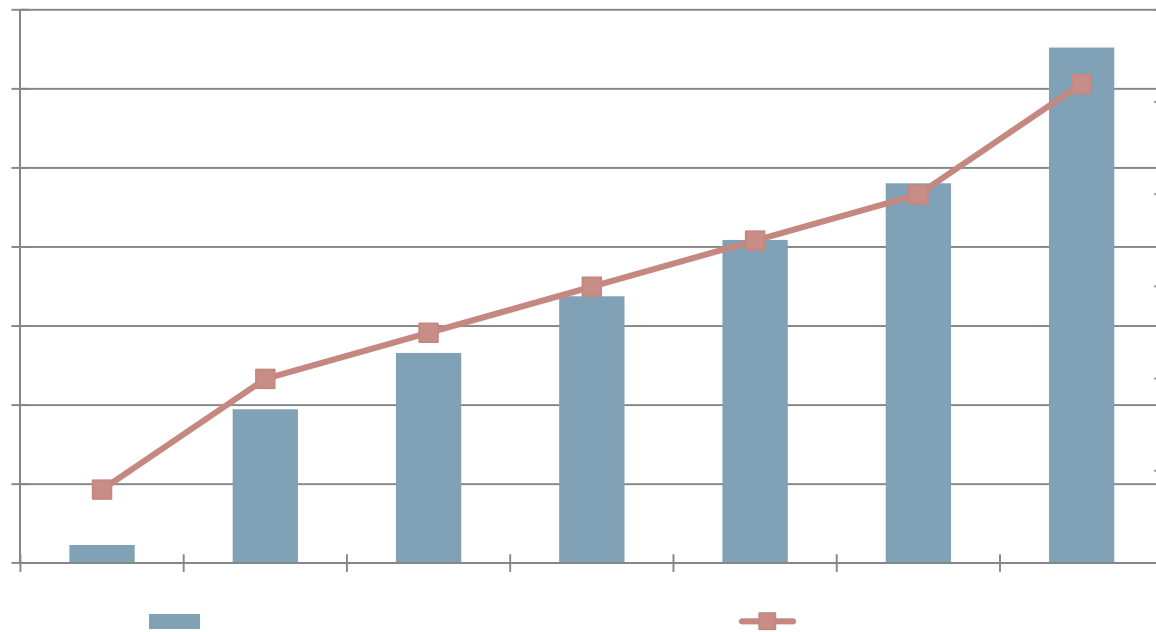
:
) ...
) ...
) ...
 :

, NPV

Pro-Consulting



21. NPV



Pro-C

9.1.

() ()

) ...

...

...

...

...

...

...

...

...

1.

2.

3.

4.

5.

6.

....



...

....

...

....

Pro-Consulting

9.2.

, ,
, ... – ... %

-) ...
-) ...
-) ...
-) ...
-) ...
-) ...
-) ...
-) ...
-) ...

Pro-Consulting

9.3. SWOT-

(S)	(W)
<ul style="list-style-type: none"> ▼ ▼ ▼ ▼ ▼ ▼ ▼ ▼ 	<ul style="list-style-type: none"> ▼ ▼ ▼ ▼ ▼ ▼ ▼ ▼
(O)	(T)
<ul style="list-style-type: none"> ▼ ▼ ▼ ▼ ▼ ▼ ▼ ▼ 	<ul style="list-style-type: none"> ▼ ▼ ▼ ▼ ▼ ▼ ▼ ▼

Pro-Consulting

